

MY TOWN



Gülşen
Ersan

Places

bakery: fırın

bank: banka

barber's: berber dükkanı

bookshop: kitabevi

bridge: köprü

bus stop: otobüs durağı

butcher's: kasap

cafe: kafe

castle: kale

cinema: cinema

circus: sirk

fire station: itfaiye

grocery: bakkal

hospital: hastane

hotel: otel

library: kütüphane

mosque: cami

museum: müze

palace: saray

pharmacy: eczane

playground: oyun alanı

police station: polis merkezi

pool: havuz

post office: postane

restaurant: restoran

school: okul

shoe shop: ayakkabı mağazası

shop: dükkan

shopping mall: alışveriş merkezi

stadium: stadyum

stationery: kırtasiye

supermarket: süpermarket

theatre: tiyatro

tower: kule

toy shop: oyuncak dükkanı

train station: tren istasyonu

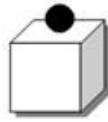
zoo: hayvanat bahçesi

Prepositions of Place



in

çinde



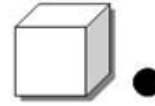
on

üstünde



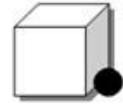
under

altında



near

yanında



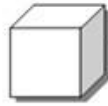
next to

bitişinde



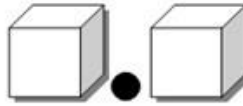
in front of

önünde



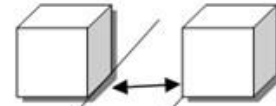
behind

arkasında



between

arasında



opposite

karşısında

Giving Directions



go straight

Düz git



turn right

Sağa dön



turn left

Sola dön



cross

Karşıya geç



go past ...

Geç



take the first right

Birinci sağdan dön



on your left

solunda

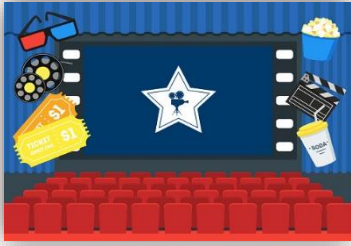


on your right

sağında



Write the words under the pictures



- bookshop
- butcher's
- cinema
- police station
- pharmacy
- toy shop

R	S	C	A	U	M	A	S	I	A	I	A	L	N
R	D	M	U	N	U	U	R	S	S	S	O	O	H
E	S	N	C	S	Q	G	S	R	L	O	C	U	C
U	Y	A	U	M	I	I	B	E	H	S	A	M	Z
N	T	M	M	O	C	U	Y	C	U	E	S	O	R
I	S	H	Z	C	R	R	S	H	A	M	U	S	L
H	D	R	Q	O	E	G	R	R	Y	R	C	Q	I
Z	R	R	R	C	U	R	Y	A	I	S	R	U	B
Z	S	I	O	Q	E	A	S	A	U	Q	I	E	R
O	S	R	P	O	E	C	E	T	L	S	C	Y	A
O	G	N	M	G	R	U	T	S	S	P	O	S	R
T	N	A	R	U	A	T	S	E	R	A	A	A	Y
A	N	G	S	R	C	T	T	C	U	C	S	I	R
O	I	E	N	O	I	T	A	T	S	E	R	I	F

- GROCERY
- RESTAURANT
- MUSEUM
- MOSQUE
- SCHOOL
- FIRE STATION
- ZOO
- LIBRARY
- PLAYGROUND
- CIRCUS

Choose the correct option.

1- A: I need colourful papers for my school project. Is there a _____ near here?

B: Yes, there is one on the corner.

- a) bakery
- b) hospital
- c) stationery
- d) palace

2- Children are playing in the _____.

- a) barber's
- b) playground
- c) pool
- d) museum



3- A: I want to eat cake and drink coffee.

B: Let's go to a _____.

- a) cafe
- b) pharmacy
- c) circus
- d) police station

4- Cindy goes to _____ to read books.

- a) bookshop
- b) library
- c) butcher's
- d) zoo

5- A: I have a headache. What should I do?

B: You should go to _____ and buy some medicine.

- a) fire station
- b) supermarket
- c) train station
- d) pharmacy