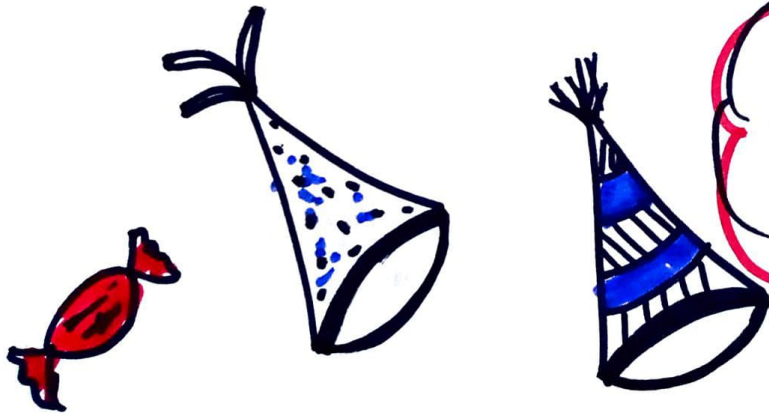




5. SINIF
7. ÜNİTE



PARTY
TIME



Mutis
Teacher

PARTIES



FANCY DRESS: Kostüm Party



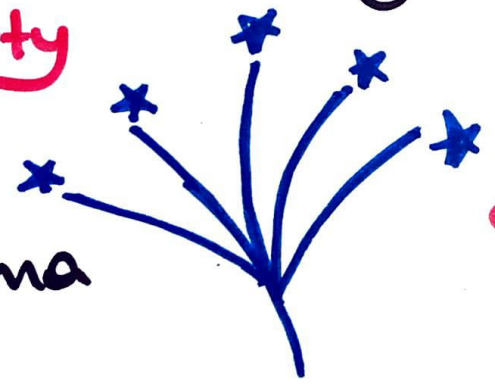
NEW YEAR'S: Yeiyl Party



BIRTHDAY: Doam Gcü Party



BARBECUE: Mangal Party



CLASS: Sınıf Party

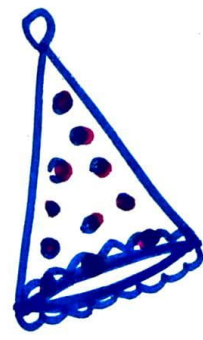


PYJAMA: Pijona Party

GRADUATION: Mezuniyet Party



FAREWELL: Veda Party



What do you need for the party?

- Cake: Pasta
- Balloon: Balon
- Candle: Mum
- Present / Gift: Hediye
- Beverage: İçecek
- Clown: Palyaço
- Camera: Kamera
- Flower: Çiçek
- Party hat: Şapka
- Confetti: Konfeti
- Invitation Card: Davetiye
- Cookie: Kurabiye
- Guest: Misafir
- Host: Ev sahibi
- Delicious: Lezzetli
- Decoration: Süsleme
- Toy: Oyuncak
- Music band: Müzik grubu
- To do list: Yapılacaklar Listesi

Have a party → Parti vermek

Decorate:

↓
Süslemek

Invite → Davet etmek

Join → Katılmak

Take photo

↓
Fotoğraf çekmek

Order → Sipariş vermek

Send → Göndermek

Blow out → Üfleme

Prepare → Hazırlamak

MUTİŞ TEACHER

EXERCISE

Surprise party - beverages - party room
candles - party hats - cake - present

1-) She makes a _____ for her son's party.

2-) Sue's friends throw a _____ for her mother.

3-) Jane lights the _____ and blows out them.

4-) Asli's mother gives her a _____.

5-) They celebrate Mert's birthday. They wear _____.

6-) It is Mary's birthday. Her mother decorates _____.

7-) They are at a party. They drink _____.

Find the odd one.

1-) balloon - birthday cake - medicine - candle

2-) present - beverage - party hat - stamp

3-) throw a party - order a cake - have a rest - dance.

MUTİS TEACHER

SEASONS

There are four seasons in a year -

Autumn/Fall (sonbahar)	Winter (kış)
Spring (ilkbahar)	Summer (yaz)

DAYS

There are seven days in a week

Monday (pazartesi)

Tuesday (salı)

Wednesday (çarş.)

Thursday (perş.)

Friday (cuma)

Saturday (cumartesi)

Sunday (pazar)

weekdays
(hafta içleri)

weekend
(haftasonu)

MONTHS

- January (ocak)
- February (şubat)
- March (mart)
- April (nisan)
- May (mayıs)
- June (haziran)
- July (temmuz)
- August (ağustos)
- September (eylül)
- October (ekim)
- November (kasım)
- December (Aralık)

There are twelve months
in a year.

MUTİŞ TEACHER

ÖNEMLİLİK
NOT



① İngilizcede mevsimlerden ve aylardan önce
"-de / -da" anlamı vermek için IN kullanılır.

→ The weather is snowy in winter.
(Kış mevsiminde hava karlıdır.)

→ My birthday is in April.
(Doğum günüm Nisan ayında)

② Günlerden önce ON kullanılır.

→ Her birthday is on Saturday.
(Doğum günüm Cumartesi günü)

TELLING THE DATE (Tarihleri Söylene)

ORDINAL NUMBERS

- 1st → First
- 2nd → Second
- 3rd → Third
- 4th → Fourth
- 5th → Fifth
- 6th → Sixth
- 7th → Seventh
- 8th → Eighth
- 9th → Ninth
- 10th → Tenth
- 11th → Eleventh
- 12th → Twelfth
- 13th → Thirteenth
- 14th → Fourteenth
- 15th → Fifteenth

- 16th → Sixteenth
- 17th → Seventeenth
- 18th → Eighteenth
- 19th → Nineteenth
- 20th → Twentieth
- 21st → Twenty first
- 22nd → Twenty second
- 23rd → Twenty third
- 24th → Twenty fourth
- 25th → Twenty fifth
- 26th → Twenty sixth
- 27th → Twenty seventh
- 28th → Twenty eighth
- 29th → Twenty ninth
- 30th → Thirtieth
- 31st → Thirty first

When is your birthday?

It's on 14th May.

(14 Mayıs'ta.)

It's on the fourth of January.

(Ocak ayının 4'ünde)

When is the party?

It's on 25th August

It is on the 11th of

February.

MUTİS TEACHER

Complete the sentences "IN-ON-AT"

- 1-) My birthday is _____ 8th April.
- 2-) His birthday is _____ March.
- 3-) I don't like watching TV _____ night.
- 4-) Her party is _____ summer.
- 5-) The party is _____ 8 o'clock.

Complete them with the ordinal numbers

A: What is the _____ month of the year?

B: It's February.

C: What is the _____ day of the week

D: It's Wednesday.

E: What is the _____ month of the year?

F: It's November

- Children's day is on the _____ of April.



Party Time
Exercises

CAN ...? / MAY ...? (Asking For Permission)

Birinde izin isterken ya da ricada bulunurken "Can I...? / May I...?" kalıplarını kullanırız.

- Can I go out and play with friends?

(Dışarı çıkıp arkadaşlarımla oynayabilir miyim?)

- May I invite my friends?

(Arkadaşlarımı davet edebilir miyim?)

ACCEPTING

- Yes, you can. (Evet yapabilirsin)

- Sure. (Kesinlikle)

- Alright. (Tamam)

- OK! (Tamam)

- Great idea. (iyi fikir)

- Good idea

- Of course. (Tabiki)

REFUSING

- I'm sorry, you can't. (Üzünüzün olması)

- I'm afraid, you can't. (Korkarm olması)

- Sorry, not right now. (Üzünüzün şu anda olması)

- No, you can't.

- I'm busy then. (O zaman meşgulüm)

EXPRESSING OBLIGATION

MUST (-meli / -malı)

Zorunluluk ifade ederken "must" yardımcı fiilini kullanırız.

Örne (+) must (+) fiil
mustn't

→ I have an English exam, I must study.
(Sınavım var, çalışmalıyım)

→ You must prepare to-do list.
(Yapılacaklar listesini hazırladın)

→ You must do homework.
(Ödevini yaptın)

→ The baby is sleeping. You mustn't listen to loud music.
(Bebek uyuyor, yüksek sesle müzik dinlenmemelisin.)

1-) What is the month after December?
 a) September c) January
 b) February d) October

2-) You have an exam tomorrow.
 a) You must go to the cinema.
 b) You can go online.
 c) You must study for it.

3-) The party starts _____ 7 o'clock
 _____ May.
 a) on/in b) at/in c) in/on

4-) I want to get a _____ for
 my best friend because it's
 her birthday.
 a) gift b) guest c) candle

5-) Mary's Birthday
 On Friday, 15 July
 At 2:30pm
 At Woody's Cafe

Which of the following is NOT
 mentioned on this card?
 a) Time b) Place c) Date d) Age

6-) Today is your birthday.
 You invite your friends to your house
 They bring a lot of gifts. Your
 brother doesn't buy a gift, but
 he brings you a flower and you're
 really happy.
 What do you say to express feelings?
 a) Welcome, nice to see you.
 b) This is so lovely, thank you.